

The background of the image is a vibrant, repeating geometric pattern. It consists of interlocking squares in shades of yellow, green, and maroon, creating a complex, woven texture. In the center of the image, there is a solid green rectangular box. Inside this box, the word "KWANZAA" is written in large, bold, white, sans-serif capital letters.

KWANZAA

Dec. 26

DAY 1- UMOJA (Unity)

Today we light the black candle on the Kinara. It is a day of togetherness, sharing feelings.





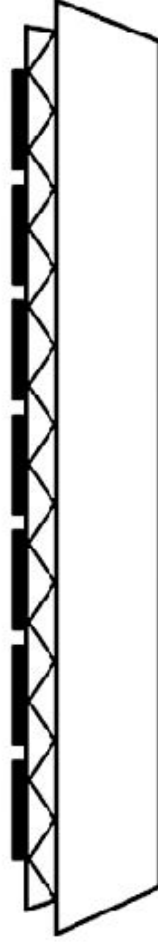
Downloaded from www.123coloring.com





Kwanzaa

Kwanzaa begins December 26 and lasts until the first day of January. Kwanzaa is a time when people come together to celebrate their African heritage. During Kwanzaa families decorate their homes with many unique Kwanzaa symbols. Below is a Kinara, which is a candle holder. For each day of Kwanzaa a candle is lit to celebrate the seven Kwanzaa principles. Three candles should be colored red to represent struggles faced. Three should be colored green to represent a prosperous future. One large black candle in the center represents the richness of African skin. Color the candles and kinara below. Cut them out and glue the kinara onto construction paper. For each day during Kwanzaa glue a candle onto the construction paper as follows below.



Day 2-Color this candle red and place it in the first spot to the left to represent self-determination.

kujichagulia



Day 1-Color this candle black. Place it in the center of the kinara to represent unity.



Day 4-Color this candle red. On this day a gift is given that the whole family can share. Place this candle next to the other red candles.

ujamaa



Day 6-Color this candle red. Place it next to the other red candles to represent creativity.

kuumba



Day 3-Color this candle green. Place it in the first place to the right to represent responsibility.

ujima



Day 5-Color this candle green. Place it next to the other green candle to represent purpose.

nia



Day 7-Color this candle green. This candle represents good faith and believing everything good will happen.

imani



The background of the image is a vibrant, repeating geometric pattern. It consists of interlocking squares in shades of yellow, green, and maroon, creating a complex, woven texture. In the center, there is a solid green rectangular box.

KWANZAA

Dec. 27

DAY 2- Kujichagulia (Self-Determination)

Today we light a red candle on the Kinara. It is a day of togetherness, sharing traditions.





The background of the image is a vibrant, repeating geometric pattern. It consists of interlocking squares in shades of yellow, green, and maroon, creating a complex, woven texture. In the center, there is a solid green rectangular box.

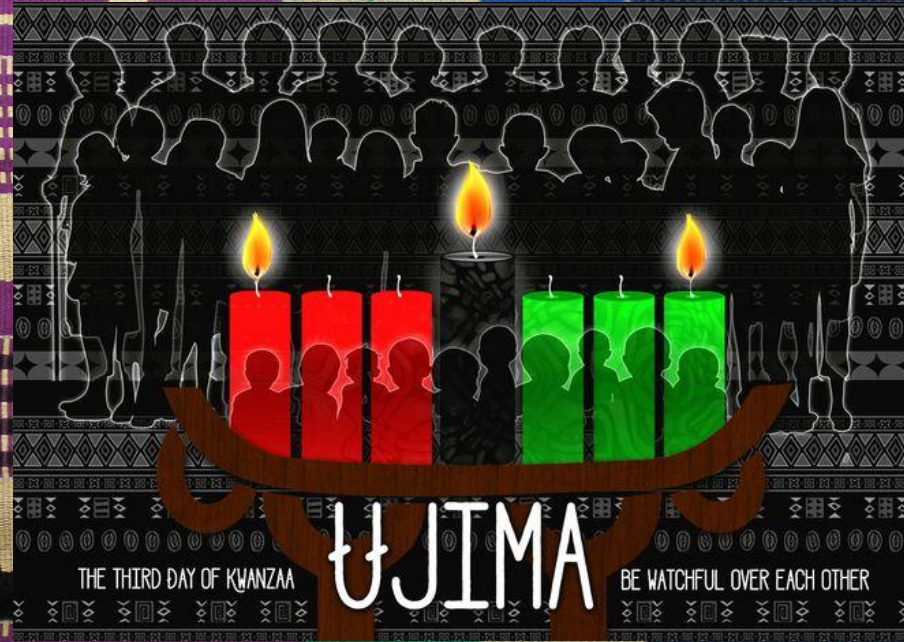
KWANZAA

Dec. 28

DAY 3- Ujima

(Collective Work and Responsibility)

Today we light a green candle on the Kinara. It is a day of togetherness, sharing a common goal.





The background of the image is a vibrant, repeating geometric pattern. It consists of interlocking squares in shades of yellow, green, and maroon, creating a complex, woven texture. In the center, there is a solid green rectangular box.

KWANZAA

Dec. 29

DAY 4- Ujamaa (Cooperative Economics)

Today we light a red candle on the Kinara. It is a day of togetherness, sharing family gifts.





Double Art Alley ©



The background of the image is a vibrant, repeating geometric pattern. It consists of interlocking squares in shades of yellow, green, and maroon, creating a complex, woven texture. In the center, there is a solid green rectangular box.

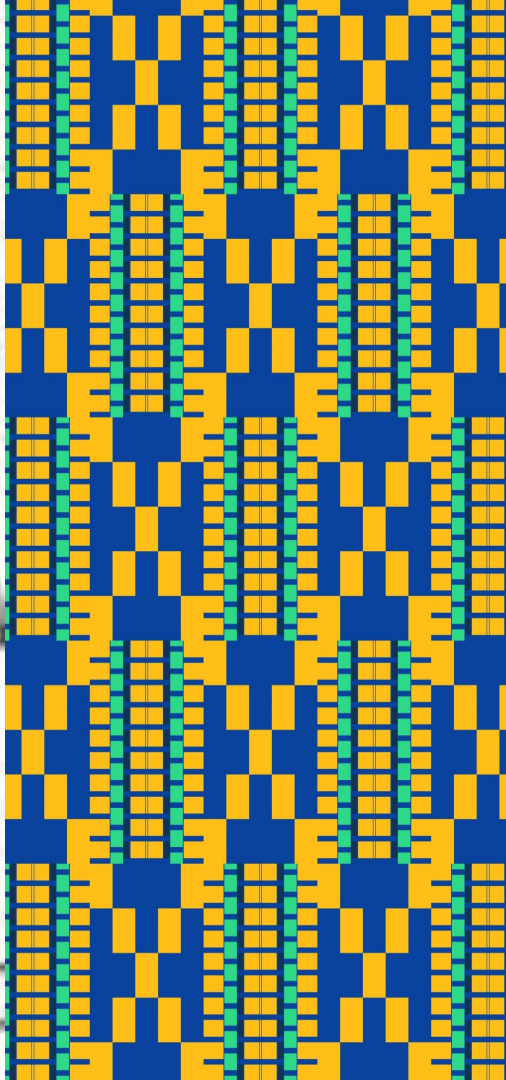
KWANZAA

Dec. 30

DAY 5- Nia (Purpose)

Today we light a green candle on the Kinara. It is a day of togetherness, sharing dreams and hopes.





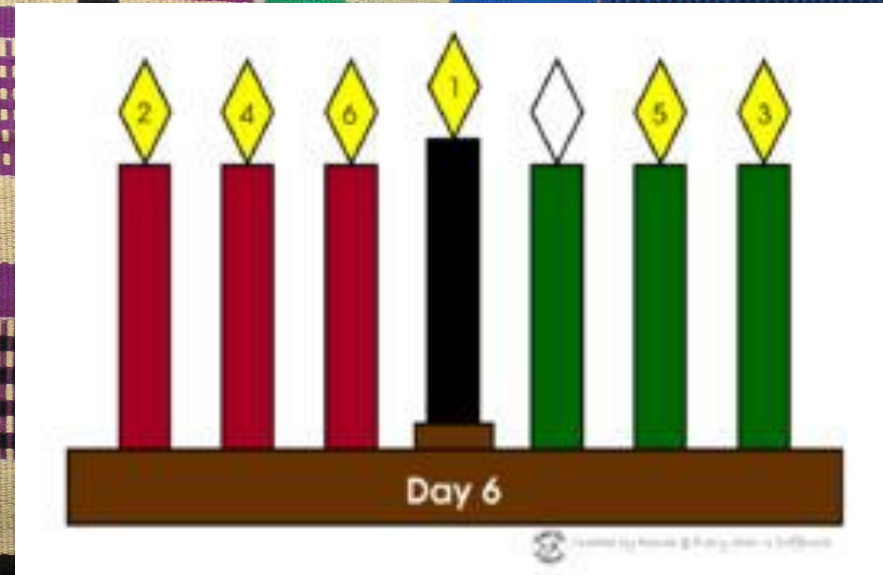
The background of the image is a vibrant, repeating geometric pattern. It consists of interlocking squares in shades of yellow, green, and maroon, creating a complex, woven texture. In the center, there is a solid green rectangular box.

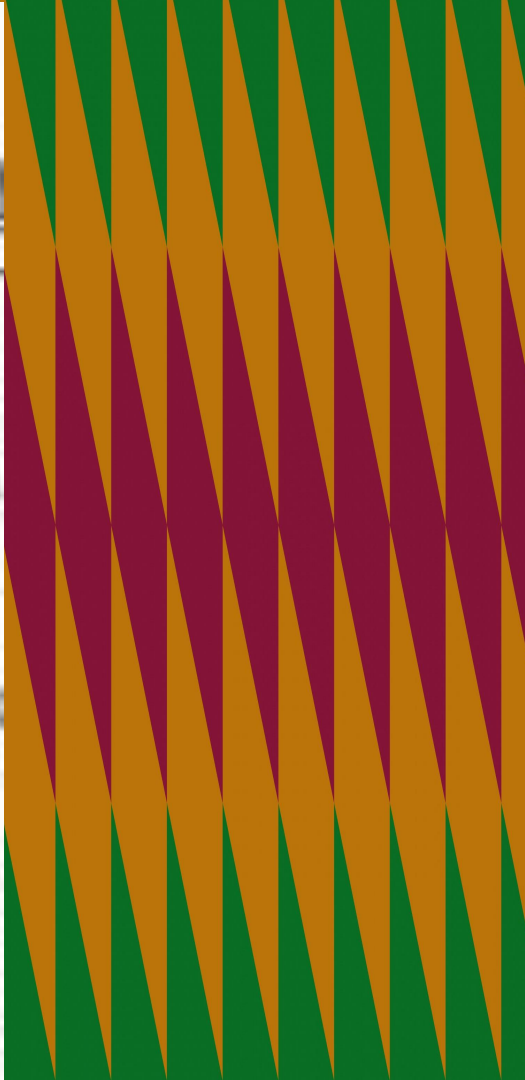
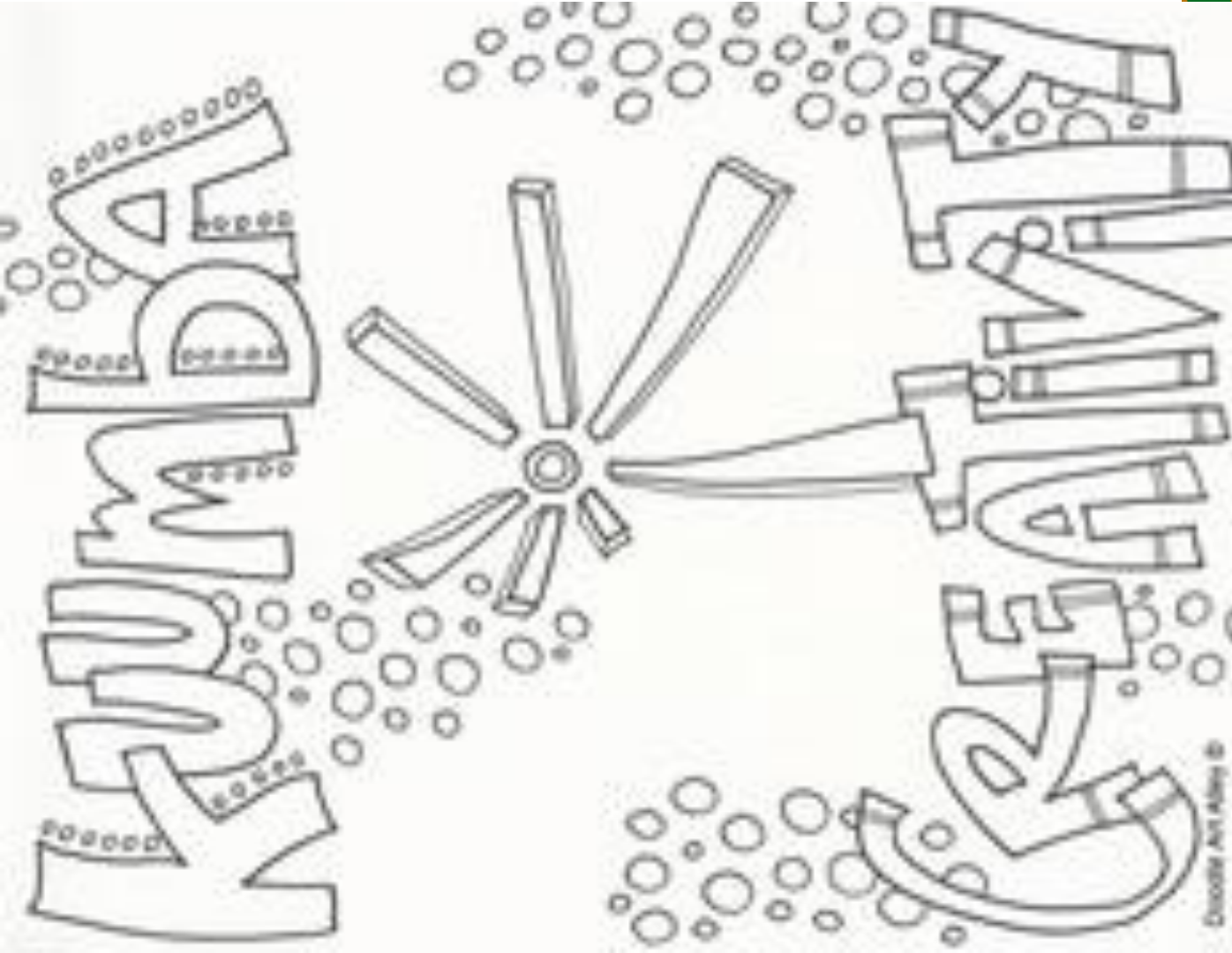
KWANZAA

Dec. 31

DAY 6- Kumbaa (Creativity)

Today we light a red candle on the Kinara. It is a day of togetherness, sharing creativity.





The background of the image is a vibrant, repeating geometric pattern. It consists of interlocking squares in shades of yellow, green, and maroon, creating a complex, woven texture. In the center of the image, there is a solid green rectangular box. Inside this box, the word "KWANZAA" is written in large, bold, white, sans-serif capital letters.

KWANZAA

January 1

DAY 7- Imani (Faith)

Today we light a green candle on the Kinara. It is a day of togetherness, sharing a feast, or Karamu.



